

INTERNATIONAL DORMITORY (FACILITIES, ROOM STRUCTURE)

Facilities Description – International dormitory

- 1F: Inspector room, Parcel Pick-Up Station, Post box, Photocopier, Laundry room, Gym
- Male room: 2F ~ 4F
- Female room: 5F ~ 8F
- 9F: Faculty housing
- **Kitchens** are located on **even number** floors.
- **Study rooms** are located on **odd number** floors.
- Public fridge can be found in lounges for odd number floors.

INTERNATIONAL DORM 1F



1F (Common area): Inspector office, ATM, Parcel Pick-Up Station, Vending machine, Public laundry room, Fitness center, Lobby

EACH FLOOR OF INTERNATIONAL DORM



1. Kitchen (Even# Floor)



2. Study Room (Odd# Floor)



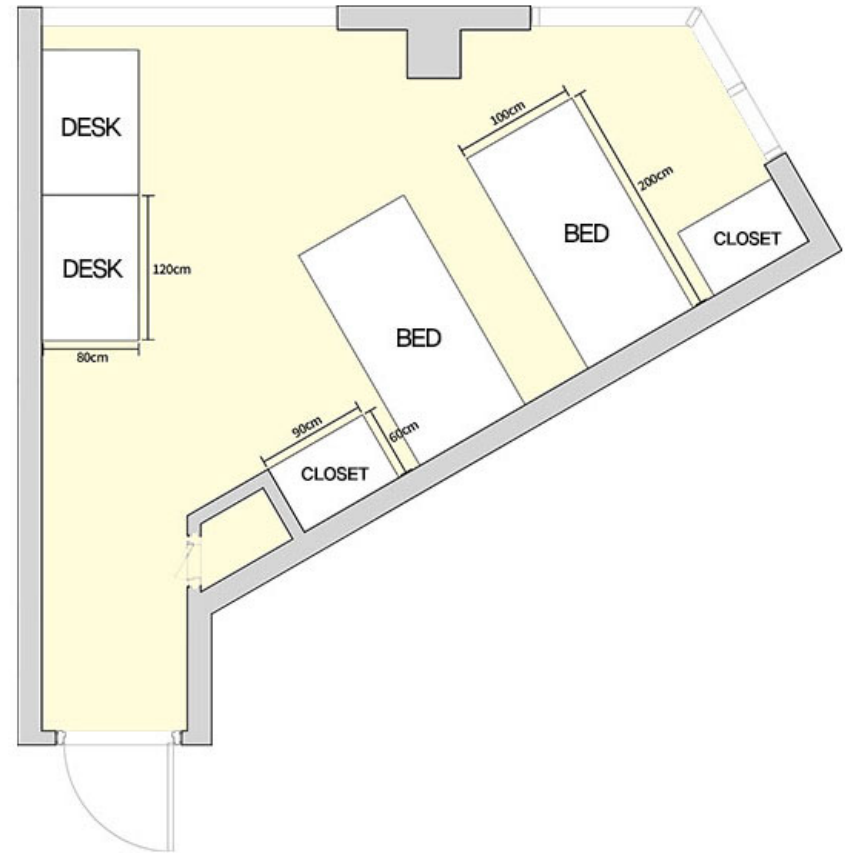
3. Toilet



4. Shower Room

- ✓ **Kitchens** are at **even** number floors. Due to limited space in fridge, **don't store large amount of food**. Keep wearing mask unless you are eating.
- ✓ **Study rooms** are at **odd** number floors. If you study over-night, please use study room, so that you don't disturb roommates sleeping. Please wear mask all the time at public areas.
- ✓ When using shower, please don't play music or sing, as it might disturb other students.
- ✓ Don't dry your personal laundry in public bathroom or toilet.

ROOM STRUCTURE (INTERNATIOANL DORMITORY)



2 BED ROOM